

Mounting

The thermostat can be mounted either directly by using the centre mounting bush and nut or by using the adaptor bracket provided.

This bracket can be fitted in anyone of four positions, by locating the small lug on the thermostat frame in one of the notches located on the periphery of the centre portion of the adaptor bracket. It can be used for clearance hole mounting, or for tapped hole mounting, using the captive nuts provided.

If tapped holes are needed, fit the captive nuts to the bracket and slide them to the required centres. Any excess length of bracket can be broken off along one of the two lateral grooves provided.

Lock the bracket to the control in the position required by means of the centre nut.

Install the control and secure by means of the mounting screws.

NOTE

When installing the capillary tube, care must be taken to avoid kinks, twists or sharp bends in the tube.

No attempt should be made to shorten the tube under any circumstances.

The datum marker should be fitted in a suitable place on the liner.

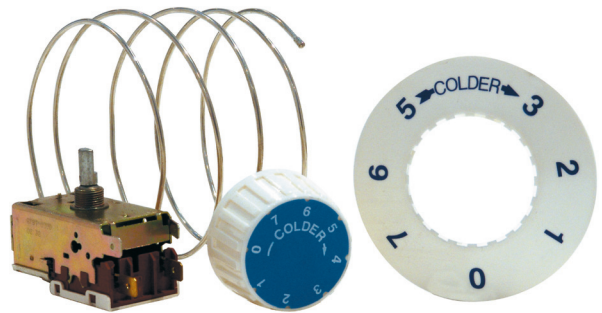
Push-on-connectors are provided for conversion where screw terminals were previously used.

Push dial knob onto dial shaft.

Use either numbered face of disc, or skirt as reference for calibration aligning 0 at lowest setting.

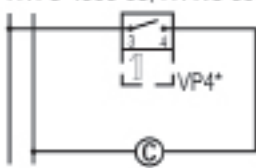
If using skirt, push disc into knob with plain face uppermost.

With HTP4-0000, use push-button in place of disc.

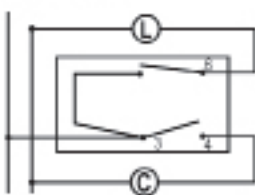


Part No.	Application
HTC1-4000-01	Compressor Refrigerator
HTA2-0000	Electric Absorption Refrigerator
HTF3-4000-03	Freezer and Ice Cream Cabinet
HTP4-0000	Compressor Refrigerator Push button Defrost
HTS5-0000	Freezer with Standard Signal
HTR6-0000	Freezer with Reverse Signal
HTB7 -4000-07	Bottle or Beverage Cooler
HTW8-0000	Window Air Conditioner
HTT9-4000-09	Cycle Defrost Refrigerator

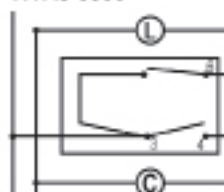
HTC1-4000-01, HTB7-4000-07
HTA2-0000, HTP4-0000
HTF3-4000-03, HTW8-0000



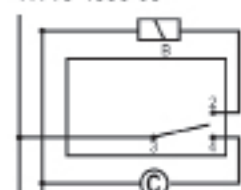
HTS5-0000



HTR6-0000



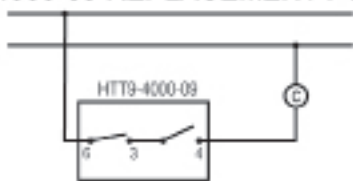
HTT9-4000-09



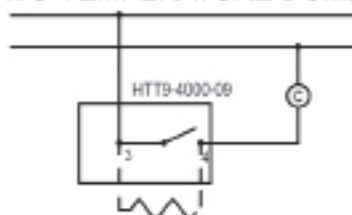
* C: Compressor L:Light B:Bypass

Appliance should be disconnected from the mains supply before any work is attempted

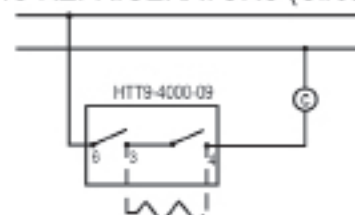
HTT9-4000-09 REPLACEMENT FOR TWO-TEMPERATURE DOMESTIC REFRIGERATORS (Circuit Options)



CONTROL WITH "OFF" POSITION FOR HEAT LEAKAGE DEFROST



CONTROL WITHOUT "OFF" USING HEAT ASSISTED DEFROST



CONTROL WITH "OFF" USING HEATER ASSISTED DEFROST